



# REMEDIATION SERVICES



**ONE SOURCE FOR ALL  
IN-SITU TREATMENT EQUIPMENT NEEDS**

Equipment Sales & Rentals

*In-Situ Blenders*

*Additive Delivery Systems*

**CONTRACTING - SUBCONTRACTING - JOINT VENTURES**



**LANG TOOL CO.**

2520 GLIDDEN RD, BEAVERTON, MI 48612

PH (989) 435-9864 FAX (989) 435-4311

*www.langtool.com Email: info@langtool.com*

***Q: WHAT IS REQUIRED TO ACCOMPLISH IN-SITU REMEDIATION PROJECTS SUCCESSFULLY AND PROFITABLY?***

***A: IT IS NECESSARY TO PRODUCE AN HOMOGENOUS MIXTURE OF THE CONTAMINATED MATERIAL AND THE ADDITIVE AT THE MINIMUM RATIO NECESSARY TO MEET THE JOB SPECIFICATIONS EFFICIENTLY AND COST EFFECTIVELY!***

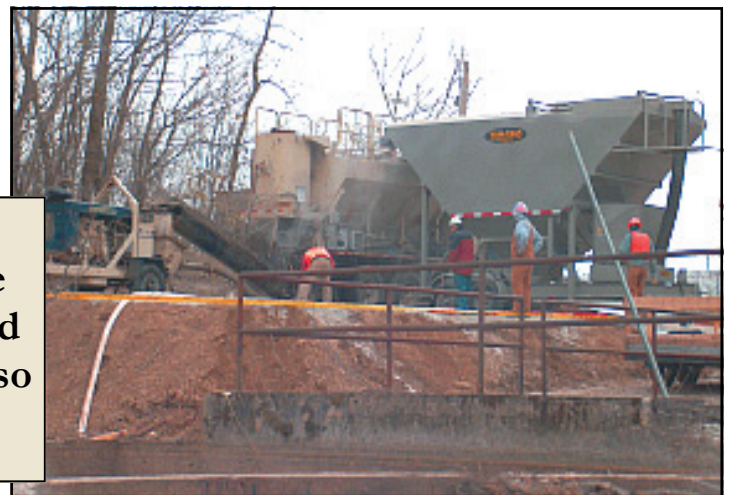
The answer is simple.

The equipment to accomplish this, however, is very sophisticated and two separate types of equipment are required.



**First: A powerful blender capable of effective mixing at the required depth and durable enough to stand up to the harsh job environment.**

**Second: A versatile additive delivery system that produces the required product when it is needed and has accurate instrumentation so additive costs can be controlled.**



As a manufacturer, LANG TOOL CO. has earned a reputation for producing the most productive and durable soil mixing equipment on the market. LTC equipment has been used on major projects in the United States and South America. From Buenos Aires to the Aleutian Islands of Alaska, Lang Tool Co. equipment has delivered consistent high production and rugged durability for our customers. In order to better serve our customers Lang Tool Co. has expanded our services to include soil mixing contracting and subcontracting. As a contractor LTC is earning a reputation for delivering high quality work on time and under budget.

LTC is the industry leader in the development of attachments for hydraulic excavators. In order to furnish the hydraulics to power these attachments, we have developed the 290-LTC and the 210-LTC Tool Carriers. The efficiency of the LTC in-situ equipment begins with the LTC Tool Carriers.

**210-LTC Tool Carrier**

Weight 63,000 lbs  
 Engine 350 Horsepower  
 Aux Hydraulics 100gpm@5,200psi

**290-LTC Tool Carrier**

Weight 82,000 lbs  
 Engine 440 Horsepower  
 Aux Hydraulics 130gpm@5,000psi

Lang Tool Co. has a sizable fleet of soil mixing equipment along with experienced supervisors and crewmembers. We have several 30 and 40 ton LTC tool carriers equipped with conventional LTC Deep Digger Blenders and additive mixing and pumping equipment for stabilization, chemical oxidation, and biological treatments. Our newest addition is the *LTC Dual Axis In-Situ Remediation Blender*. It can effectively treat to depths of 15' even in the hardest soil conditions without pre-digging.



**DUAL AXIS BLENDER**

**VERTICAL AXIS**

Torque - 68,000 lb/ft  
 Speed - 6 rpm  
 Swing Diameter - 60"

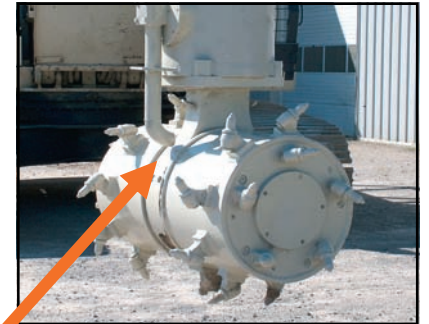
Treatment Depth Capability- 0-15' bgs

Volume of Soil Treated 15' deep Cycle- 10.9cy

Additive Delivery Plumbing- 2 1/2" SS Pipe



Counter Rotating Horizontal Axis Drums  
 Horizontal Axis Speed 78 rpm  
 Drum Diameter to Bit Tips - 40"  
 Total Torque Output - 26,000 lb/ft



NOTE ADDITIVE DELIVERY DIRECTLY AT POINT OF HIGHEST MIXING ENERGY

**DEEP DIGGER BLENDER**



The LTC Deep Digger Blender produces over 20,000 lb. ft. of torque. Combined with the LTC Tool Carrier, this blender head is capable of effectively and efficiently treating contaminated soil and sludge to depths previously thought to be beyond the scope of in-situ treatment.



# ADDITIVE DELIVERY SYSTEMS



Having the right equipment is essential to profitability but there is another essential element, **PEOPLE.**

*Lang Tool Co.* personnel have in excess of 15 years and millions of cubic yards of specific in-situ remediation experience. We have a chemical engineer on staff with extensive experience in remediation work.

We can provide your project with:

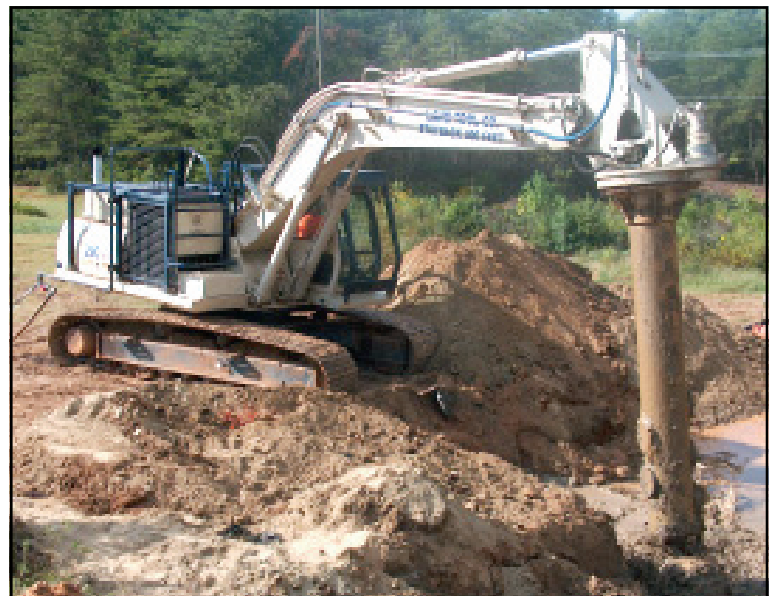
- **The equipment you need backed up with nationwide parts & service support.**
- **Leased equipment with rental purchase options.**
- **Overseas sales with guaranteed buy backs.**
- **Custom designed equipment per job specific requirements**
- **Extended reach & depth blending machines.**
- **Nationwide in-situ remediation subcontract services.**

## Main Office:

2520 Glidden Road  
Beaverton, MI 48612  
ph (989)435-9864  
fax (989)435-4311  
Cell (989) 280-7006  
[bill@langtool.com](mailto:bill@langtool.com)

## Regional Office:

1008 South 22nd Street  
Nederland, TX 77627  
ph(409) 729-7144  
fax (409) 729-5880  
cell (409) 454-1009  
[ronk@langtool.com](mailto:ronk@langtool.com)



[www.langtool.com](http://www.langtool.com)

Ph (989) 435-9864