

**BUSINESS PUBLICATION CIRCULATION STATEMENT
FOR THE 6 MONTH PERIOD ENDED DECEMBER 2011**

No attempt has been made to rank the information contained in this report in order of importance, since BPA Worldwide believes this is a judgment, which must be made by the user of the report.

100 Beard Sawmill Road, Sixth Floor
Shelton, CT USA 06484-6150
Phone: +1 203.447.2800
Fax: +1 203.447.2900
www.bpaww.com

A not-for-profit organization since 1931, BPA Worldwide is governed by a tripartite board comprised of media owners, advertising agencies and advertisers. Headquartered in Shelton, Connecticut, USA, BPA has the largest membership of any media-auditing organization in the world, spanning more than 30 countries. Worldwide, BPA audits 2,600+ media properties—including over 1,500 B-to-B publications, more than 350 consumer magazines, 150 newspapers, 550+ web sites, 40 events, email newsletters, databases, wireless and other advertiser-supported media—as well as 2,700 advertiser and agency members.

Visit www.bpaww.com for the latest audit reports, membership information and publishing and advertising industry news.



BNP Media II, LLC
2401 W. Big Beaver Road
Suite 700
Troy, MI 48084-3333
Tel. No.: (248) 362-3700
Fax No.: (248) 362-0317
www.pollutionengineering.com

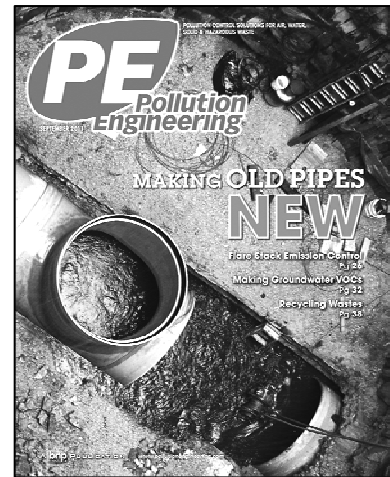
Official Publication of: None
Established: 1969
Issues Per Year: 12

FIELD SERVED

POLLUTION ENGINEERING serves the field of pollution control involved with consulting engineering firms, manufacturing, utilities, government and other.

DEFINITION OF RECIPIENT QUALIFICATION

Qualified recipients are professionals within the pollution control industry including Consulting Engineers; Engineers (Pollution Engineers, Environmental Engineers, Chemical Engineers, Chief Engineers, Civil Engineers, Design Engineers, Instrument Engineers, Plant Engineers, Process Engineers, Sanitary Engineers, Engineers, Engineering Supervisors and Directors of Engineering); Managers (Plant/Facility Managers, Plant/Facility Supervisors, Plant/Facility Superintendents, Treatment Plant Managers, Environmental Specialist Managers, Environmental Health/Safety Managers, Compliance Managers, Emergency Managers, Industrial Hygienist Managers, Project Managers, Public Safety Directors, Public Health Officers, Managers, Owners, President, Vice Presidents and Constructors/Designers); and others allied to the field.



AVERAGE NON-QUALIFIED CIRCULATION	
NON-QUALIFIED Not Included Elsewhere	Copies
Other Paid Circulation _____	168
Advertiser and Agency _____	903
Rotated or Occasional _____	-
Allocated for Trade Shows and Conventions _____	-
Digital _____	-
All Other _____	1,106
TOTAL	2,177

1. AVERAGE QUALIFIED CIRCULATION BREAKOUT FOR PERIOD						
QUALIFIED CIRCULATION	Total Qualified		Qualified Non-Paid		Qualified Paid	
	Copies	Percent	Copies	Percent	Copies	Percent
Individual _____	30,866	100.0	30,847	99.9	19	0.1
Sponsored Individually Addressed _____	-	-	-	-	-	-
Membership Benefit _____	-	-	-	-	-	-
Multi-Copy Same Addressee _____	-	-	-	-	-	-
Single Copy Sales _____	-	-	-	-	-	-
TOTAL QUALIFIED CIRCULATION	30,866	100.0	30,847	99.9	19	0.1

2a. QUALIFIED CIRCULATION BY ISSUES FOR PERIOD					
2011 Issue	Number Removed	Number Added	Print Version Only (A)	Digital Version Only (B)	Total Qualified
July _____	41	39	24,900	5,973	30,873
August _____	19	21	25,059	5,816	30,875
September _____	25	-	25,114	5,736	30,850
October _____	157	159	25,143	5,709	30,852
November _____	296	319	25,086	5,789	30,875
December _____	85	85	25,078	5,797	30,875
TOTAL	623	623			

2b. WEBSITE ACTIVITY BY MONTH						
Month	Page Impressions	User Sessions	Unique Browsers	Unique Browser Frequency	Page Duration	User Session Duration
July _____	10,409	5,195	4,596	1.13	00:56	01:56
August _____	8,694	4,190	3,692	1.13	00:52	01:45
September _____	10,041	5,028	4,503	1.12	01:03	02:10
October _____	12,496	6,776	6,017	1.13	01:01	01:51
November _____	11,794	6,431	5,735	1.12	00:55	01:47
December _____	10,228	6,002	5,355	1.12	01:08	02:05
AVERAGE:	10,610	5,604	4,983	1.13	00:59	01:56

*See Additional Data

3a. BUSINESS/OCCUPATION BREAKOUT OF QUALIFIED CIRCULATION FOR ISSUE OF NOVEMBER 2011

This issue is -% or 10 copies above the average of the other 5 issues reported in Paragraph two.

BUSINESS AND INDUSTRY	TOTAL QUALIFIED	PERCENT OF TOTAL	Print Version Only (A)	Digital Version Only (B)	POLLUTION CONTROL TITLE			
					Consulting Engineer	Engineer (Note 1)	Manager (Note 2)	Others Allied to the Field
Consulting Engineering Firms_____	18,954	61.4	15,698	3,256	9,874	2,904	6,176	-
MANUFACTURING								
Chemicals & Allied Products_____	1,126	3.6	899	227	143	445	538	-
Primary Metal Products_____	790	2.5	670	120	70	280	440	-
Food & Kindred Products_____	390	1.3	308	82	36	122	232	-
Paper & Allied Products_____	276	0.9	235	41	24	106	146	-
Transportation Equipment & Automotive Products_____	635	2.1	499	136	71	297	267	-
Metal Mining Products_____	145	0.5	114	31	17	54	74	-
Rubber and Plastic Products_____	381	1.2	311	70	31	137	213	-
Pharmaceutical Products_____	132	0.4	102	30	14	46	72	-
Biopharmaceutical/Biotechnology Products_____	118	0.4	90	28	21	37	60	-
Petroleum & Coal Products_____	353	1.1	258	95	55	166	132	-
Fabricated Metal Products_____	861	2.8	707	154	72	289	500	-
Lumber & Wood Products_____	120	0.4	101	19	11	39	70	-
Printing & Publishing_____	95	0.3	80	15	9	27	59	-
Electrical Machinery Products_____	303	1.0	231	72	46	118	139	-
Instruments & Related Products_____	234	0.8	186	48	27	97	110	-
Printed Circuit Boards/Electronic Computer/Semiconductor Products_____	272	0.9	216	56	30	101	141	-
Miscellaneous Manufacturing_____	899	2.9	707	192	106	320	473	-
Sub-Total Manufacturing	7,130	23.1	5,714	1,416	783	2,681	3,666	-
UTILITIES								
Electric/Gas Utilities_____	1,355	4.4	1,031	324	240	529	586	-
Publicly and Privately Owned Municipal or District Sanitary/Water/Waste Water Treatment Systems/Plants_____	1,789	5.8	1,445	344	133	576	1,080	-
Sub-Total Utilities	3,144	10.2	2,476	668	373	1,105	1,666	-
GOVERNMENT								
Dept. of Defense/Dept. of Energy_____	562	1.8	403	159	102	269	191	-
Administration/Environmental Programs_____	1,085	3.5	795	290	157	494	434	-
Sub-Total Government	1,647	5.3	1,198	449	259	763	625	-
Other_____	-	-	-	-	-	-	-	-
TOTAL QUALIFIED CIRCULATION	30,875	100.0	25,086	5,789	11,289	7,453	12,133	-
PERCENT	100.0		81.3	18.7	36.6	24.1	39.3	-

Note 1: Includes Pollution Engineer, Environmental Engineer, Chemical Engineer, Chief Engineer, Civil Engineer, Design Engineer, Instrument Engineer, Plant Engineer, Process Engineer, Sanitary Engineer, Engineer, Engineering Supervisor and Director of Engineering.

Note 2: Includes Plant/Facility Manager, Plant/Facility Supervisor, Plant/Facility Superintendent, Treatment Plant Manager, Environmental Specialist Manager, Environmental Health/Safety Manager, Compliance Manager, Emergency Manager, Industrial Hygienist Manager, Project Manager, Public Safety Director, Public Health Officer, Manager, Owner, President, Vice President, and Constructor/Designer.

3b. QUALIFICATION SOURCE BREAKOUT OF QUALIFIED CIRCULATION FOR ISSUE OF NOVEMBER 2011							
QUALIFICATION SOURCE	Qualified Within			Print Version Only (A)	Digital Version Only (B)	Total Qualified	Percent
	1 year	2 year	3 year				
I. TOTAL - Direct Request: _____	18,656	7,751	1,417	22,035	5,789	27,824	90.1
a. Written _____	1,492	526	89	2,063	44	2,107	6.8
b. Telecommunication _____	11,876	5,529	1,026	14,999	3,432	18,431	59.7
c. Electronic _____	5,288	1,696	302	4,973	2,313	7,286	23.6
II. TOTAL - Request from recipient's company: _____	-	-	-	-	-	-	-
a. Written _____	-	-	-	-	-	-	-
b. Telecommunication _____	-	-	-	-	-	-	-
c. Electronic _____	-	-	-	-	-	-	-
III. TOTAL - Membership Benefit: _____	-	-	-	-	-	-	-
a. Individual _____	-	-	-	-	-	-	-
b. Organizational _____	-	-	-	-	-	-	-
IV. TOTAL - Communication from recipient or recipient's company (other than request): _____	-	-	-	-	-	-	-
a. Written _____	-	-	-	-	-	-	-
b. Telecommunication _____	-	-	-	-	-	-	-
c. Electronic _____	-	-	-	-	-	-	-
V. TOTAL - Sources other than above (listed alphabetically): _____	3,051	-	-	3,051	-	3,051	9.9
Association rosters and directories _____	-	-	-	-	-	-	-
*Business directories _____	3,051	-	-	3,051	-	3,051	9.9
Manufacturer's, distributor's and wholesaler's lists _____	-	-	-	-	-	-	-
Other sources _____	-	-	-	-	-	-	-
VI. TOTAL - Single Copy Sales: _____	-	-	-	-	-	-	-
TOTAL QUALIFIED CIRCULATION	21,707	7,751	1,417	25,086	5,789	30,875	100.0
PERCENT	70.3	25.1	4.6	81.3	18.7	100.0	-

*See Additional Data

3c. MAILING ADDRESS BREAKOUT OF QUALIFIED CIRCULATION FOR ISSUE OF NOVEMBER 2011				
MAILING ADDRESS	Print Version Only (A)	Digital Version Only (B)	Total Qualified	Percent
Individuals by name and title and/or function _____	25,086	5,789	30,875	100.0
Individuals by name only _____	-	-	-	-
Titles or functions only _____	-	-	-	-
Company names only _____	-	-	-	-
Multi-Copy Same Addressee copies _____	-	-	-	-
Single Copy Sales _____	-	-	-	-
TOTAL QUALIFIED CIRCULATION	25,086	5,789	30,875	100.0

4. GEOGRAPHICAL BREAKOUT OF QUALIFIED CIRCULATION FOR ISSUE OF NOVEMBER 2011									
State	Print Version Only (A)	Digital Version Only (B)	Total Qualified	Percent	State	Print Version Only (A)	Digital Version Only (B)	Total Qualified	Percent
Maine _____	159	25	184		Kentucky _____	317	68	385	
New Hampshire _____	156	27	183		Tennessee _____	506	116	622	
Vermont _____	77	11	88		Alabama _____	374	84	458	
Massachusetts _____	727	162	889		Mississippi _____	172	39	211	
Rhode Island _____	90	22	112		EAST SO. CENTRAL	1,369	307	1,676	5.4
Connecticut _____	389	73	462		Arkansas _____	188	48	236	
NEW ENGLAND	1,598	320	1,918	6.2	Louisiana _____	348	45	393	
New York _____	1,539	312	1,851		Oklahoma _____	241	57	298	
New Jersey _____	1,009	166	1,175		Texas _____	1,540	376	1,916	
Pennsylvania _____	1,567	335	1,902		WEST SO. CENTRAL	2,317	526	2,843	9.2
MIDDLE ATLANTIC	4,115	813	4,928	16.0	Montana _____	102	40	142	
Ohio _____	1,146	270	1,416		Idaho _____	143	29	172	
Indiana _____	547	110	657		Wyoming _____	71	14	85	
Illinois _____	1,187	242	1,429		Colorado _____	455	136	591	
Michigan _____	805	191	996		New Mexico _____	139	34	173	
Wisconsin _____	684	150	834		Arizona _____	321	91	412	
EAST NO. CENTRAL	4,369	963	5,332	17.3	Utah _____	206	64	270	
Minnesota _____	516	116	632		Nevada _____	127	29	156	
Iowa _____	307	57	364		MOUNTAIN	1,564	437	2,001	6.5
Missouri _____	458	120	578		Alaska _____	37	7	44	
North Dakota _____	87	25	112		Washington _____	370	120	490	
South Dakota _____	66	20	86		Oregon _____	254	64	318	
Nebraska _____	215	39	254		California _____	2,174	508	2,682	
Kansas _____	289	71	360		Hawaii _____	47	9	56	
WEST NO. CENTRAL	1,938	448	2,386	7.7	PACIFIC	2,882	708	3,590	11.6
Delaware _____	99	20	119		UNITED STATES	24,891	5,572	30,463	98.7
Maryland _____	543	104	647		U.S. Territories _____	56	24	80	
Washington, DC _____	100	25	125		Canada _____	121	53	174	
Virginia _____	770	175	945		Mexico _____	1	8	9	
West Virginia _____	112	31	143		Other International _____	14	131	145	
North Carolina _____	687	170	857		APO/FPO _____	3	1	4	
South Carolina _____	327	97	424		TOTAL QUALIFIED CIRCULATION	25,086	5,789	30,875	100.0
Georgia _____	722	151	873						
Florida _____	1,379	277	1,656						
SOUTH ATLANTIC	4,739	1,050	5,789	18.8					

AVERAGE ANNUAL AUDITED QUALIFIED CIRCULATION AND CURRENT UNAUDITED CIRCULATION STATEMENTS						
6-Month Period Ended:	Audited Data	Audited Data	Audited Data	Audited Data	Audited Data	Circulation Claim
	January-June 2009	July-December 2009	January-June 2010	July-December 2010	January-June 2011	July-December 2011*
Total Audit Average Qualified	31,958	30,875	30,875	30,808	30,847	30,866
Qualified Non-Paid Total	31,934	30,851	30,854	30,792	30,829	30,847
Print Version Only	28,217	26,580	25,527	25,140	24,893	25,044
Digital Version Only	3,717	4,271	5,327	5,652	5,936	5,803
Qualified Paid Total	24	24	21	16	18	19
Print Version Only	24	23	20	16	18	19
Digital Version Only	-	1	1	-	-	-
Post Expire Copies included in Paid Circulation	**NC	**NC	**NC	**NC	**NC	**NC
Average Annual Order Price	**NC	**NC	**NC	**NC	**NC	**NC

*NOTE: July - December 2011 data is unaudited. With each successive period, new data will be added until six 6-month periods are displayed.

**NC = None Claimed.

ADDITIONAL DATA

METHOD OF DISTRIBUTION

All qualified circulation conforms to the field served and definition of a recipient's qualification, as reported. Print copies are distributed via postal services and other carriers. Recipients who request the digital version are notified via email when the version is available.

STATEMENT OF CONTENT PLATFORM

Replica - Editorial and design are unchanged from the original print edition.

PARAGRAPH 3B:

Business directories include 1 source of circulation for a quantity of 3,051 copies or 9.9%.

WEBSITE GLOSSARY:
Unique Browsers: An identified and unduplicated Cookie Browser that accesses internet content during a measurement period. Each browser visiting a site instrumented with Site Census code is assigned a unique cookie id to help determine browser uniqueness
Page Impressions: The number of web pages successfully viewed by all browsers within the reporting period
User Sessions: A single continuous set of activity attributable to a browser resulting in one or more pulled text downloads from a site. A period of inactivity of more than 30 minutes terminates the session
Unique Browser Frequency: The average number of user sessions per Unique Browser over the selected reporting period
User Session Duration: The average time a browser remained on the site per session
Page Duration: The average time a browser spent viewing any page(s) on the site

1. AVERAGE QUALIFIED CIRCULATION BREAKOUT FOR PERIOD - PRINT VERSION ONLY						
QUALIFIED CIRCULATION	Total Qualified		Qualified Non-Paid		Qualified Paid	
	Copies	Percent	Copies	Percent	Copies	Percent
Individual	25,063	100.0	25,044	99.9	19	0.1
Sponsored Individually Addressed	-	-	-	-	-	-
Membership Benefit	-	-	-	-	-	-
Multi-Copy Same Addressee	-	-	-	-	-	-
Single Copy Sales	-	-	-	-	-	-
TOTAL QUALIFIED CIRCULATION	25,063	100.0	25,044	99.9	19	0.1

1. AVERAGE QUALIFIED CIRCULATION BREAKOUT FOR PERIOD - DIGITAL VERSION ONLY						
QUALIFIED CIRCULATION	Total Qualified		Qualified Non-Paid		Qualified Paid	
	Copies	Percent	Copies	Percent	Copies	Percent
Individual	5,803	100.0	5,803	100.0	-	-
Sponsored Individually Addressed	-	-	-	-	-	-
Membership Benefit	-	-	-	-	-	-
Multi-Copy Same Addressee	-	-	-	-	-	-
Single Copy Sales	-	-	-	-	-	-
TOTAL QUALIFIED CIRCULATION	5,803	100.0	5,803	100.0	-	-

PUBLISHER'S AFFIDAVIT		
We hereby make oath and say that all data set forth in this statement are true.	Date signed	January 2, 2012
Catherine M. Ronan, Corporate Audience Audit Manager	State	Michigan
Rita M. Foumia, Corporate Strategy Director	County	Oakland
(At least one of the above signatures must be that of an officer of the publishing company or its authorized representative.)	Received by BPA Worldwide	January 2, 2012
IMPORTANT NOTE:	Type	PJ
This unaudited circulation statement has been checked against the previous audit report. It will be included in the annual audit made by BPA Worldwide.	ID Number	P098Y0D1